



Halsey Taylor®
Satisfying Thirsts Since 1912

Filtered Single High-Efficiency HAC Green

Barrier-Free Cooler



MODEL: ☐ HACG8PV-WF
☐ HACG8SS-WF

GENERAL

Energy-efficiency performance exceeds average market performance by 35%

Self-contained, high-efficiency refrigerated wall-mount water cooler is easily accessibly for physically challenged individuals. Meets state and federal accessibility requirement, including Americans with Disabilities Act. Unit is certified to NSF/ANSI 61 & 372 and meets requirements of Safe Drinking Water Act. Unit provides 50° F water at 80° F inlet water and 90° F ambient.

LEAD REDUCTION FILTER

Halsey Taylor Water Cooler With Filter is equipped with the WaterSentry® HWF172 system which is certified to ANSI/NSF 42 and 53 for the reduction of lead, Class I particulate, aesthetic chlorine, taste and odor. Features include Quick-Disconnect, 1/4 turn installation. Automatic inlet shut-off valve that closes when filter is removed. Filter should be replaced every 1500 gallons (5678 liters) or approx. one (1) year following installation. Use part # 55897C when ordering replacement filters.

CABINET

Stainless steel panels resist wear and corrosion. Durable satin finish helps hide water spots and fingerprints.

COOLER TOP

Non-corrosive stainless steel cooler top, no. 300 series with satin finish resists stains and corrosion and is easy to maintain. Anti-splash ridge reduces splatter. Contoured to insure proper drainage.

BUBBLER

Exclusive one-piece, chrome-plated two-stream mound-building bubbler with non-removable anti-squirt feature and integral hood insures a satisfying drink of water.

PUSH BAR ACTUATION MECHANISM

Self-closing light-touch push bars on front and sides with raised letters for the visually impaired.

AUTOMATIC STREAM HEIGHT REGULATOR

Self-closing assembly is located inside unit to prevent tampering. Unit resists corrosion and liming. A constant stream height is automatically maintained under line pressures that vary from 20 to 105 psi.

INLET STRAINER

Easily cleaned in-line strainer screen traps particles of 140 microns or larger before they enter the waterway.

TEMPERATURE CONTROL

Positive sensing thermostat for controlling temperature of storage tank water. Factory set at 50° F Adjustable $\pm 5^\circ$ F

STORAGE TANK

Non-pressurized stainless steel evaporator/storage tank for long life. Waterways are certified to NSF/ANSI 61, far exceeding the requirements of the Safe Drinking Water Act.

REFRIGERATION SYSTEM

High-efficiency, hermetically sealed, positive start compressor with lifetime lubrication and built-in overload protection, efficient capillary sizing, large capacity dryer-strainer, and self-lubricated fan cooled condenser. System uses R134a refrigerant. Protected by Halsey Taylor's Limited 5 Year Warranty

VENTILATION

Insure proper ventilation by maintaining 6" (152mm) minimum clearance from the cabinet louvers to wall.

SUGGESTED SPECIFICATIONS

Shall include high-efficiency refrigeration system. Shall deliver 8.0 GPH of 50° F water at 90° F ambient and 80° F inlet water. Shall have stainless steel basin with removable drain strainer. Bubbler shall be two-stream, mound building type. Separate valve and automatic stream regulator shall be mounted within cabinet. Refrigeration system shall employ high efficiency, positive start compressor using R134A, non-pressurized tank with totally encapsulated insulation and be controlled by positive sensing thermostat. Shall have front and side push-bar water controls with raised lettering for the visually impaired. Cooler shall comply with ANSI 117:1 and ADA for visual and motion disabilities. The manufacturer shall certify the unit to meet the requirements of NSF/ANSI 61 & 372 and the Safe Drinking Water Act. Unit complies with ARI Standard 1010.

NOTE: Continued product improvement makes specifications subject to change without notice. See Halsey Taylor website for most current spec sheet.

JOB NAME: _____

ENGINEER/CONTRACTOR NAME: _____

APPROVAL: _____

DATE: _____

HACG BARRIER-FREE SERIES

Model No.	GPH Capacity Cooled to 50° F**				Base Rate Cap.	F.L. Amps	Shipping Weight lb.	Rated Watt Usage
	Ambient Air Temp							
	70°F	80°F	90°F†	100°F				
HACG8*-NF	9.7	8.8	8.0	7.2	8.0	2.8	67	260

* Finish indicator: PV for Platinum Vinyl and SS for Stainless Steel cooler panels

**With projector service and tap water at 80° F

† UL listed and complies with ARI Standard 1010

Trap and service stop not included



halseytaylor.com

HALSEY TAYLOR, 2222 CAMDEN COURT, OAK BROOK, ILLINOIS 60523

SPEC00118 / 7-2013

Filtered High-Efficiency, Single Barrier Free

(CONTINUED)

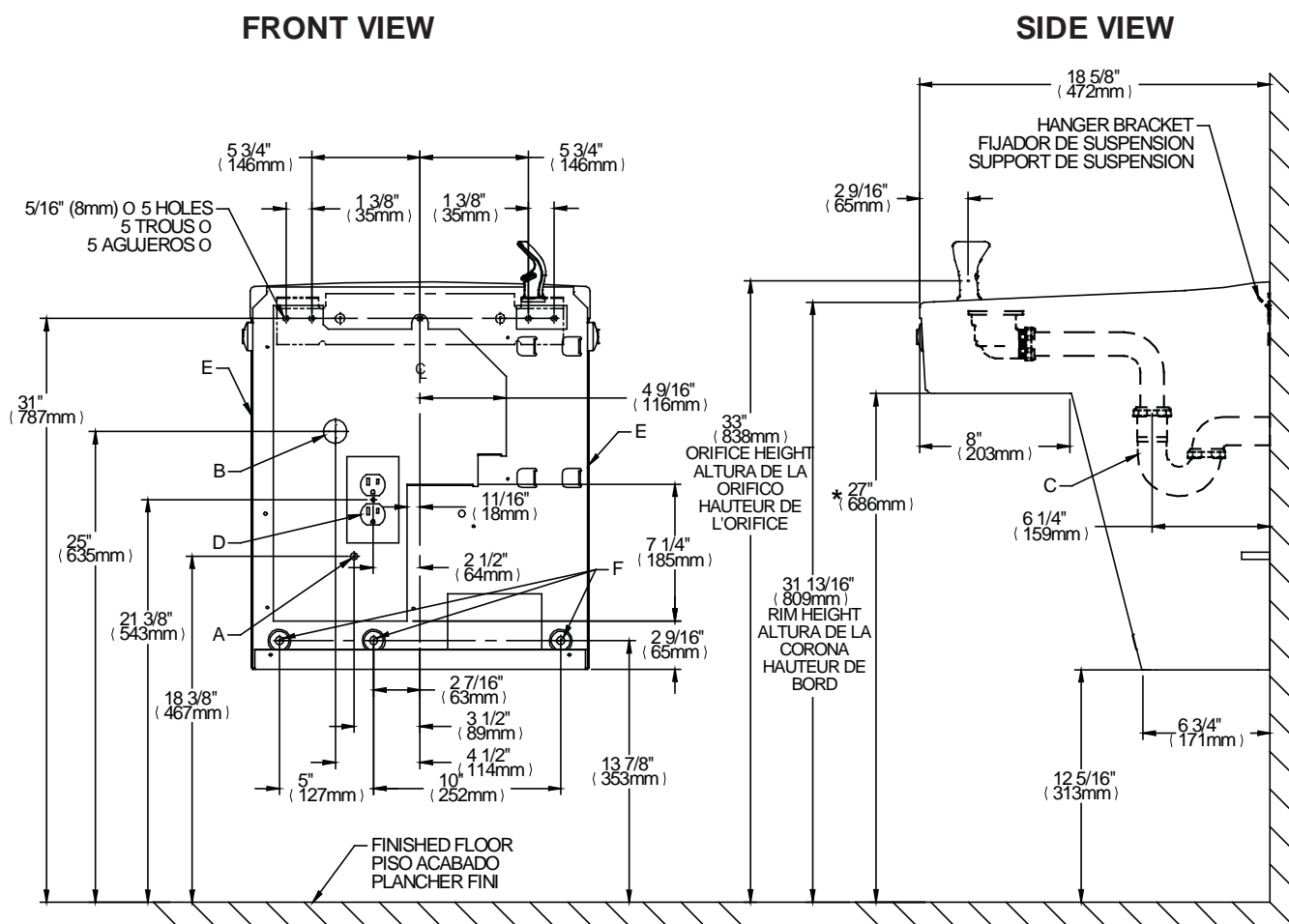
OPERATING PRESSURES:

Supply water - 105 psi maximum

ELECTRICAL

Furnished with plug-in, 3-wire grounding type service cord. Standard 120 volt, 60 Hz, single phase. Install 120-volt receptacle, rated at 15-amp minimum, to receive 3-wire parallel blade grounding type male plug.

Trap and service stop not included.



REDUCE HEIGHT BY 3" FOR INSTALLATION OF CHILDRENS ADA COOLER *ADA REQUIREMENT

LEGEND

A = RECOMMENDED WATER SUPPLY LOCATION. SHUT OFF VALVE (NOT FURNISHED) TO ACCEPT 3/8 O.D. UNPLATED COPPER TUBE.

B = RECOMMENDED LOCATION FOR WASTE OUTLET 1-1/4" O.D. DRAIN

C = 1-1/4 TRAP NOT FURNISHED**

D = ELECTRICAL SUPPLY (3) WIRE RECESSED BOX

E = INSURE PROPER VENTILATION BY MAINTAINING 6" (152 mm) (MIN.) CLEARANCE FROM CABINET LOUVERS TO WALL.

F = 7/16 BOLT HOLES FOR FASTENING UNIT TO WALL

Halsey Taylor®